



The Engineering Informer

INSIDE THIS ISSUE:

TREASURER'S REPORT	2
CALENDAR	2
WINTER SOCIAL	3
VOLUNTEERS NEEDED	4
SAVE THE DATE	4
MEMBER BIO	5
WEBEX LOGIN	6
MISC.	6
ADVERTISEMENTS	7

WebEx: this month's presentation will be broadcast on WebEx so please plan on tuning in on the web if you can't be here in person! See the instructions on how to use WebEx on page 6 of this newsletter.

IMPORTANT NEWS

NEXT MEETING:

December 9, 11:30 AM @ Pizza Ranch on 41st Street

- Denise Truckenmiller from Avera will discuss emotional intelligence.

NEW MEMBERS:

- Bryce Hunt

PRESIDENT'S COLUMN

BY RYAN JOHNSON-PE

Merry Christmas Eastern Chapter Members!

Winter, along with the snow and cold weather, is starting to settle in. Let's hope this winter is a more mild that last years! I'm writing this letter from the Sanford Hospital baby room while my wife and I watch our brand new baby son, Abel William, sleep. What an awesome experience!

Our next monthly meeting will be held December 9th from 12:00 to 1:00 at the 41st Street Pizza Ranch. Come early for pizza and the opportunity to socialize with your peers. The speaker will be Denise Truckenmiller, from Avera McKennan, who will discuss emotional intelligence. Emotional intelligence is the ability to read, understand, and adapt to the emotions of others and ourselves. Why this is important - A recent study by CareerBuilder states that 71% of employers value emotional intelligence over IQ. Employers, feel people with high emotional intelligence are able to manage and lead others to positive outcomes quicker and more amicably than peers with lower emotional intelligence. The good news is that emotional intelligence is a learned behavior and can be applied in our personal and professional lives! Feel free to invite other in our profession to this great presentation.

Thanks to Mr. Paul Wiegand, the Iowa Statewide Urban Design and Specifications (SUDAS) director who presented at our last monthly meeting. It was good to learn about a nationally recognized standards system that was developed by our close neighbors. Personally speaking, I hope South Dakota follows suit someday.

The Winter Social is scheduled for December 11th from 4:30 to whenever at the Cherry Creek Bar and Grill on east 26th Street. Come and enjoy appetizers provided by SDES and the opportunity to catch up with your peers. This has been a fun, well-attended event in the past and I hope many of you are able to attend this year as well.

Please help me in welcoming new member Bryce Hunt from DGR. As always, keep recruiting and volunteering! New members and hard work is our future!

Lastly, I want to mention again that the Eastern Chapter meetings can be watch via WebEx. This service provides an opportunity for the chapter members located outside of Sioux Falls to participate in chapter activities. Instructions on how to participate via WebEx are found, every month, in the newsletter.

Thank you, and have a fun and safe holiday season!

Ryan Johnson

TREASURER'S REPORT

BY LANCE WEATHERLY, PE

Treasurer's Report

	Balance as of	12/8/2014	
Previous General Fund Balance	11/7/2014	\$	24,137.59
Expenses:			
speaker lunch - November	\$	(10.25)	
Eng Exam lunches	\$	(214.62)	
WebEx (November)	\$	(51.94)	
Informer Ads - overpayment refund	\$	(100.00)	
SDSU Foundation (East. Chap. Scholarship)	\$	(2,000.00)	
Total		\$	(2,376.81)
Deposits:			
Interest (November)	\$	2.42	
Informer Ads	\$	700.00	
Total		\$	702.42
Total General Fund		\$	22,463.20
Previous Scholarship Fund Balance	11/7/2014	\$	7,701.37
Expenses:			
Scholarship expenses - postage/envelopes	\$	(80.51)	
Total		\$	(80.51)
Deposits:			
Golf Outing Deposit #5	\$	225.00	
Total		\$	225.00
Total Scholarship Fund		\$	7,845.86
Total Account Balance		\$	30,309.06

**IMPORTANT CALENDAR ITEMS****EASTERN CHAPTER MEETINGS:**

- December 9, 11:30 @ Pizza Ranch on 41st Street
- January 13, 11:30 @ Pizza Ranch on 41st Street
- February 10, 11:30 @ Pizza Ranch on 41st Street
- March 10, 11:30 @ Pizza Ranch on 41st Street
- April 14, 11:30 @ Pizza Ranch on 41st Street

Eastern Chapter Winter Social

December 11, 2015, 4:30 PM
Cherry Creek Bar & Grill

E-Week

February 22–28, 2015

Eastern Chapter Awards Banquet

February 28, 2015
Holiday Inn City Centre

2015 Annual Conference

April 8, 2015
Ramkota Hotel, Pierre



SDES WINTER SOCIAL

Thursday, December 11th

Starts at 4:30 P.M.

Free Appetizers served at 5:00 P.M.

Cash Bar

Cherry Creek Bar and Grill
Banquet Room Downstairs



Come join us for appetizers, beverages, and a great time to catch up with your colleagues in this annual informal setting.

VOLUNTEERS NEEDED FOR ENGINEERS WITHOUT BORDERS—ERIN STEEVER, PE

USA project on the Rosebud Reservation:

UPDATE: As Karen Min, instructor at SDSU, mentioned at the October Eastern Chapter Meeting, the South Dakota Section of ASCE is assisting with developing a team for the Engineers Without Borders (EWB) – USA project on the Rosebud Reservation which will be located west of Mission, SD. A Responsible Engineer in Charge (REIC) has been identified and we are looking to fill a few more volunteer roles (structural background is desired, other disciplines are also welcome). The City College of New York Student Chapter of ASCE, with local assistance from the South Dakota State University Student Chapter of ASCE will be part of the team.

EWB-USA was contacted by the Sioux Tribe of the Rosebud Indian Reservation for design and construction of a 10,000 sq ft community center in Keya Wakpala Development, South Dakota. The proposed building will consist of a large central area for holding religious ceremonies and other community events, along with supporting facilities and building systems. The planners further desire that the people of the local community be employed in the building's construction and that local materials be used in its fabrication. More generally they envision a building that adheres to the principles of green design.

If this project interests you, please contact Erin Steever (erins@bannerassociates.com) and visit www.ewb-usa.org for more information.

SAVE THE DATE

SDES Eastern Chapter Awards Banquet



Saturday, February 28th

Holiday Inn City Centre

GETTING TO KNOW YOU

Member Bio

City of Sioux Falls
224 W Ninth Street
PO Box 7402
Sioux Falls, SD
Phone: 605-367-8623
Fax: 605-367-4310

LANCE WEATHERLY, PE

Degree:
SDSU—B.S. in Civil Engineering,
M.S. in Civil Engineering

A brief history... I was born in Luverne, MN as my family of German/Danish descent originates from the SW Minnesota area. Growing up I lived in Hills-MN, Brookings, Huron and then Flandreau where I graduated high school. My college transcript would show it took me a little more time than average to determine my profession but eventually I graduated with my B.S. in Civil Engineering from SDSU in 2004. After a lengthy sabbatical I am planning to complete my Master's degree this Spring 2015 at SDSU. In January 2005 I started my engineering career at Banner Associates focusing on municipal, civil, water/ww projects. In January 2013 I began working for the City of Sioux Falls where I am presently employed as a Civil Engineer, PE. My girlfriend, Kari and I have been together for ten years. Kari works as a Healthcare Grant Manager and also has a part-time law practice. For fun I enjoy hiking in National Parks and Black Hills, hunting, and spending time with family/friends.



A LITTLE BIT MORE ABOUT OUR MEMBER OF THE MONTH:

Family: Girlfriend: Kari

Hometown: Flandreau, SD

Job title and years with firm: Civil Engineer, 2 years.

Favorite Room in Your House: Garage, to be able to work on projects and avoid housework

Normal Breakfast: Shredded Wheat 'n Bran and Casey's coffee

Last CD Purchased: Johnny Cash "Lost"

Hobbies: Spending time with friends and family

What do you collect? Tools used infrequently but think I need to acquire

Best Personality Trait: 110% everyday

Pets: 3 dogs, 4 horses

Pet peeves: Entitled people

Favorite beverage: Diet Mountain Dew

Favorite TV Show: Seinfeld

Favorite Season: Anytime when the sun sets after 7pm

People may not know... I have visited Croatia, Bosnia, and Montenegro in Eastern Europe

What made you want to be an engineer? As a previous architecture student the instructor became upset because I was more concerned about designing the mechanical room than the building aesthetics

What do you like best about being an engineer? Being able to blend creativity with technical design, and working on projects that greatly benefit society

Describe a significant event in your personal life. Graduating college was significant as it took me six years and I dropped out a couple of times and joined the workforce, it showed me the value of education and to don't ever give up!

Describe an achievement from the past year you are proud of. City of Sioux Falls Public Works division Fullenkamp Management award nominee for 2013

What are you looking forward to in the next year? Finally graduating my with Master's

I hate it when... drivers lingering in the passing lane

Where is your favorite place and why? Ptarmigan Tunnel in Glacier National Park, the last picturesque summit of a grueling three day backpacking trip in the Montana wilderness

We are on the web

<http://www.sdes.org/>

2014-2015 OFFICERS AND CHAIRPERSONS

Officers

President	Ryan Johnson, PE
President Elect	Ray Pierson, PE
Vice President	Kurt Peppel, PE
Secretary/Treasurer	Lance Weatherly, PE
Chapter Director(2nd term)	Travis Clark, PE
Chapter Director(1st term)	Joshua VandenBos, EIT
State Director	Kristen Gundvaldson, PE
Past President	Phil Gundvaldson, PE

Committees

Nominating Committee	Paul Korn, PE
Mathcounts	Phil Gundvaldson, PE
Scholarship	Lance Mayer, PE
Events Coordinators	
eWeek	Erin Steever, PE
STEMS Girls	Erin Steever, PE
Free First Fridays	Erin Steever, PE
Winter Social	Gabe Laber, PE
Golf Outing	Gabe Laber, PE
Awards	Brad Ludens, PE
Audio/Visual IT	Chad Stensland, PE
Newsletter	Joshua Peterson, PE
Membership List	Myron Adam, PE

For any and all newsletter articles, additions, edits, corrections, and important dates,

CONTACT:

JOSHUA PETERSON, PE
CITY OF SIOUX FALLS, PUBLIC WORKS
224 W NINTH STREET
PO BOX 7402
SIOUX FALLS, SD 57117-7402
605-367-8616
jpeterson@siouxfalls.org

Webex Login Instructions

1. Navigate your internet browser to:
2. <https://sdes-eastern.webex.com>
3. Select the meeting date from the calendar in the "Browse Meetings" Window.
4. Click the "Register" link by the monthly meeting.
5. Fill in your first name, last name, email address and hit the "Register Now" button at the bottom.
6. A registration email with all the information will be sent to log into the meeting.



For all *State Society* membership information and other business, contact:

Gail Boddicker, Executive Director
SDES
Rapid City, SD 57709
605-394-6674
Gail.Boddicker@sdsmt.edu

SDES MISSION STATEMENT

SDES is the state society of engineers from all disciplines that promotes the ethical and competent practice of engineering, advocates licensure, enhances the image of its members, and advocates legislation and public policy for the betterment of human welfare and the profession.

PDH Documentation

Sign-in sheets for Eastern Chapter meetings are posted on the SDES website for members to use for PDH documentation. Go to www.sdes.org to



MINNEHAHA COUNTY

Minnehaha County Highway Department

2124 East 60th Street North
Sioux Falls, SD 57104
(605) 367-4316
www.minnehahacounty.org

Transportation Excellence.

www.bannerassociates.com

Brookings
Sioux Falls
Vermillion
Milbank
Rapid City

Toll Free
1.855.323.6342

Civil/Transportation
Municipal Engineering
Land/Site Development
Water Treatment, Storage & Distribution
Wastewater Collection & Treatment
Water Resources
Surveying

BANNER
Engineering | Architecture | Surveying



Providing Quality Engineering
for over 60 years!

- Aviation
- Electrical Power
- Civil / Survey
- Water / Wastewater

Sioux Falls, SD 605.339.4157
Rock Rapids, IA 712.472.2531
Sioux City, IA 712.266.1554

email: dgr@dgr.com - website: dgr.com

SERVING OUR COMMUNITIES FOR OVER 100 YEARS.

Phone 605.334.4499 | Learn more at HRGreen.com

TRANSPORTATION | WATER | GOVERNMENTAL SERVICES | SENIOR LIVING | ENERGY | LAND DEVELOPMENT

LASTING PRECAST SOLUTIONS FOR AMERICA'S INFRASTRUCTURE

HancockTM

www.hancockconcrete.com

Sioux Falls, SD | Devils Lake, ND
Lake View, IA | Hancock, MN
Cannon Falls, MN | Courtland, MN | Moorhead, MN

JSA ENGINEERS AND LAND SURVEYORS

Land Development • Municipal • Streets • Water • Sewer • GPS • Construction Staking

6810 S. Lyncrest Avenue • Suite 101
Sioux Falls, South Dakota 57108-2515
605-367-1036 • Fax 605-367-1002

Ulteig Engineering, Surveying,
and Consulting Services

5701 South Corporate Place
Suite 1
Sioux Falls, SD 57108
Tel: 605-323-2306

[in](#) [f](#) [t](#) [You Tube](#)

www.ulteig.com

YOUR SOURCE FOR CONSTRUCTION MATERIALS

BROCKWHITE
CONSTRUCTION MATERIALS

SIoux FALLS
818 East 50th Street N
605-339-1977 1-888-265-5315
www.BrockWhite.com

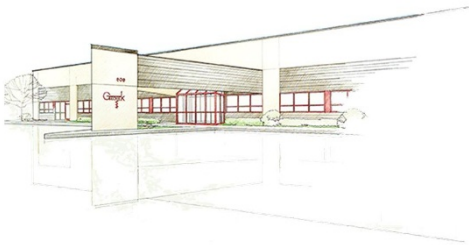
HELPING BUILD YOUR SUCCESS

GEOTEK

GEOTEK ENGINEERING & TESTING SERVICES, INC.

Resources for Design & Construction

909 East 50th Street North
 Sioux Falls, South Dakota 57104
 P: 605-335-5512 F: 605-335-0773
 1-800-354-5512
 www.geotekeng.com



Geotechnical Engineering · Construction Materials/NDT
 Environmental · Indoor Air Quality/Industrial Hygiene



CITY OF SIOUX FALLS PUBLIC WORKS

Providing a Better Quality of Life for You!

Engineers Supporting SDES Eastern Chapter: Shannon Ausen, Andy Berg, Tom Berkland, Mark Cotter, Jeff DesLauriers, Jeff Dunn, Kerry Ellis, Rod Harms, Heath Hoftiezer, Chad Huwe, Ryan Johnson, Dena Knutson, Brett Lovro, Brad Ludens, Jacob Maras, Troy Miller, John Osman, Kurt Peppel, Mark Perry, Josh Peterson, Wes Philips, Nick Ritter, Tim Stefanich, Curt Struck, Josh VandenBos, Shannon VerHey, Robbie Veurink, Lance Weatherly



**SUPPLYING PRECAST
 CONCRETE PRODUCTS
 FOR OVER 90 YEARS**

CONCRETE PIPE



MANHOLES & INLETS



ARCH PIPE



ARCH BRIDGE



TUNNELS & UNDERPASS



BOX CULVERTS



Our Precast Concrete Products have withstood the test of time, providing quality, dependable services for over 90 years to cities and counties in South Dakota.

SALES REPRESENTATIVES

Steve Myer, PE
 Eastern SD Sales
 Cell: 605-933-0112
 Fax: 605-718-0808

Bill Huber
 Western SD Sales
 Cell: 605-209-0979
 Fax: 605-718-0808

Dan Bjerke, PE
 Bridges and Box Culverts
 Cell: 605-381-0493
 Fax: 605-718-0808

www.cretexconcreteproducts.com

Subsurface Utility Exploration

Brent Anderson
 605.351.5139

Evan Dailey
 205.903.3260

PO Box 1206, Sioux Falls, SD, 57101

"Providing quality, professional utility locating services for the region since 2002"

SAVE MONEY

and gain effective capacity quickly and affordably with
 Ess Brothers & Sons, Inc. I & I Prevention Products

FLEX SEAL
 UTILITY
 SEALANT®



9350 County Road 19
 Loretto, MN 55357
 Phone: (763) 478-2027

Go to www.essbrothers.com
 to see details on all our
 products.



INFI-SHIELD®
 UNI-BAND



1111 N. Lake Avenue
 Sioux Falls, SD 57104

605-271-5527

infrastructuredg.com



Municipal Engineering | Transportation Engineering/Planning | Water Resources
 Site Development | Construction Observation | Parks & Recreation
 Land Surveying

DAKOTA PUMP INC.

The Total Solution

Sewage Pump Stations

- Wet Well Mounted Lift Stations
- Flooded Suction Lift Stations
- Self-Priming Lift Stations
- Obround Package Pump Stations

Water Pump Stations

- Modular Water Booster Stations
- Grade Mounted Water Booster Stations
- Water Booster Pump Stations
- Water Control Vaults

Offices:

po box 947
 25524 413th Ave
 Mitchell, SD 57301
 ph. 605.996.6636 | fax. 605.996.6067

www.dakotapump.com

H&W Contracting, LLC

Thomas Hurd
 President/Owner

3416 W. Hovland Drive
 Sioux Falls, SD 57107
 Phone: 605/339-8834
 Fax: 605/339-9175
 Cellular: 605/351-3339
 E-mail: tom@h-wcontracting.com



Certified Testing Services, Inc.

Geotechnical Engineering - Construction QC - Construction Observation - Materials Testing

SIOUX CITY
 (712) 252-5132

STORM LAKE
 (712) 213-8378

To advertise in this publication, contact Joshua Peterson at: jpeterson@siouxfalls.org or 367-8616.

The cost is \$75 for a standard business card-size advertisement.

Thank you to all of you who continue to generously support the Eastern Chapter of SDES.