

MEMBERS OF THE

NATIONAL SOCIETY OF PROFESSIONAL ENGINEERS
SDES EASTERN CHAPTER NEWSLETTER

PO BOX 1512 SIOUX FALLS, SD 57101 | WWW.SDES.ORG

NSPE-SD EASTERN CHAPTER
SOUTH DAKOTA
ENGINEERING SOCIETY

INSIDE THIS ISSUE

PRESIDENT'S COLUMN	1
TREASURER'S REPORT	2
UPCOMING EVENTS	3
DECEMBER MEETING	4
AWARD NOMINATIONS	5
MEMBERSHIP OPTIONS	6
NEW MEMBER	7
WEBEX LOGIN	8
ADVERTISEMENTS	9-11

WebEx: Our upcoming monthly presentations will be broadcast on WebEx so please plan on tuning in on the web to stay socially distance. See the instructions for how to use WebEx on pages 4 and 8 of this newsletter.

IMPORTANT NEWS

Upcoming meetings will be held virtually on WebEx

Welcome to our new members:

Wes Dickhut

Dane Ekdorn

PRESIDENT'S COLUMN

BY BEN SCHOLTZ, PE

Well, the results are in from our membership survey regarding everyone's comfort level for social meetings in the COVID era and the general consensus is...we go virtual! So unfortunately, our annual winter social will be cancelled and we're working to develop a format for the Awards "banquet" to provide everyone with an opportunity to feature outstanding projects and members. Our first virtual monthly meeting will be next week. See additional info in this newsletter for details.

Virtual monthly meetings are also being planned for January and February. The February monthly meeting will likely be incorporated with the Awards Ceremony and held sometime during E-week.

One benefit of "going virtual" is that SDES members from across the state – in different chapters, can all have access to the presentations, so keep an eye out for information from the State Board Director on other virtual offerings from the Central and Black Hills Chapters also!

Please welcome our new chapter members: Wes Dickhut and Dane Ekdorn.

The weather in our area has been surprisingly pleasant, and hopefully everyone can take an opportunity to enjoy the sun and mild temperatures before winter arrives...whenever that might be!

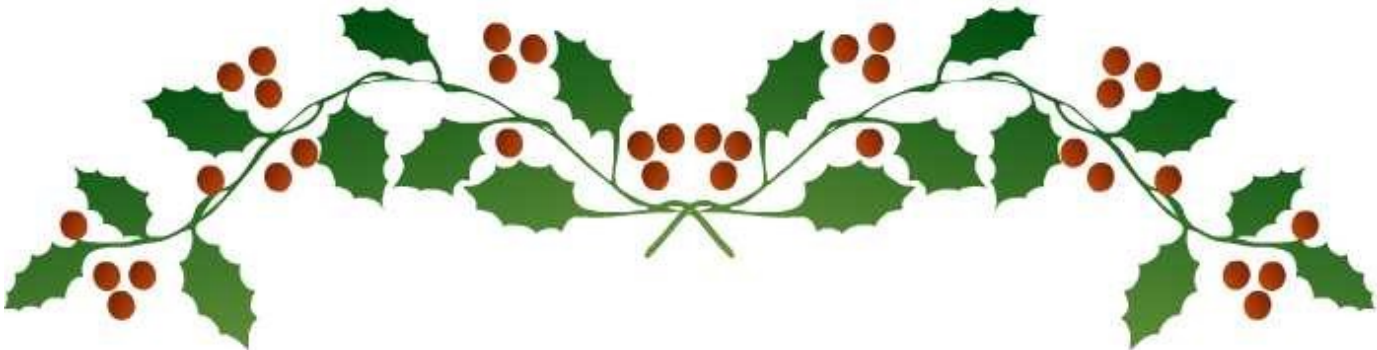
I hope you all have a safe and enjoyable holiday – stay healthy and wear your mask ;)



TREASURER'S REPORT

BY SCOTT LAVOY, PE

Previous General Fund Balance	10/16/2020		\$	11,366.15
<u>Deposits:</u>				
Interest Payment	\$	0.09		
Newspaper Ads	\$	75.00		
Total:			\$	75.09
<u>Expenses:</u>				
Total:			\$	-
Total General Fund Balance:			\$	11,441.24
Previous Scholarship Fund Balance	10/16/2020		\$	(602.94)
<u>Deposits:</u>				
Total:			\$	-
<u>Expenses:</u>				
Letters and Postage	\$	(88.00)		
Total:			\$	(88.00)
Total Scholarship Fund Balance:			\$	(690.94)
Total Account Balance	12/1/2020		\$	10,750.30



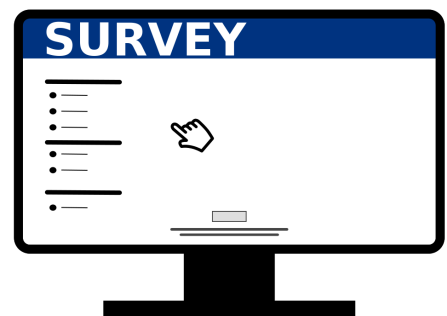
UPCOMING EVENTS

- No Winter Social
- Tuesday, December 15th—Monthly virtual meeting
- Award nominations will be sent out soon. Due at the end of January!
- January—Monthly virtual meeting
- February—Monthly virtual meeting & virtual award banquet

SURVEY RECAP

Thank you to those that responded to the survey. Based on the survey results, the following decisions have been made:

- **There will be No Winter Social**
- **Monthly meetings will be held virtually for the upcoming months (December, January and February)**
- **Virtual format of Awards Ceremony “banquet” (in late February)**



Thank you for renewing your newsletter sponsorships. **Newsletter advertisements** are available throughout the entire year, so if you don't see your company listed, Contact Nancy Hoines for more information. Phone: 605-951-1004,

DECEMBER VIRTUAL MONTHLY MEETING

December's Virtual Monthly Meeting via WebEx

Join Sam Cotter, with HR Green, for a technical discussion on Sioux Falls Main Pump Station, a 65 MGD pump station, with screening.

Title: Main Pump Station, Sioux Falls, SD

The presentation will cover:

- Site selection
- Design review & flow evaluation
- Surge analysis
- Construction review
 - *Mass concrete in cold & hot weather
 - *HDPE liner
 - *Construction progress photos



Login Information for SDES Eastern Chapter Meeting: Virtual via Webex on Tuesday, December 15th at Noon (CST)

Meeting number (access code): 177 153 4933

Meeting password: wtKmtTKE784

Join from the meeting link:

[SDES and ACEC/SD WebEx Enterprise Site - Start Your Meeting](#)

Tap to join from a mobile device (attendees only)

+1-650-479-3208,,1771534933## Call-in toll number (US/Canada)

Join by phone

1-650-479-3208 Call-in toll number (US/Canada)

Join from a video system or application

Dial 1771534933@sdes.webex.com

You can also dial 173.243.2.68 and enter your meeting number.



ENGINEERING AWARD NOMINATIONS WES PHILIPS, PE

Nominations Needed for Engineering Awards – SDES Eastern Chapter

As you wrap up projects for the year, please take some time to reflect on your accomplishments and those of your peers. **Nominate a worthy engineer or project for one of our annual awards:**

- Outstanding Engineering Achievement (Project)
- Engineer of the Year
- Young Engineer of the Year

There are many engineers and projects in the Eastern Chapter that deserve recognition for a job well done. **Nomination forms will be e-mailed out soon and are due at the end of January.**



NEW MEMBERSHIP OPTIONS

BY NANCY HOINES

At the June Annual Membership Meeting the SDES membership voted to add to new membership options for Two Tier Membership (State and Chapter), typically referred to as State Only Memberships. The purpose is to recognize years of service by State Only members by offering Two-Tier (State Only) Retired Memberships and Two Tier (State Only) Life Memberships. Hopefully, this encourages more of our state/chapter only members to maintain their memberships after retirement allowing them to still be part of the organization and encouraging them to share their knowledge and wisdom with younger members.

The Two-Tier (State Only) Retired Membership is available to members if the person has been a continuous member of SDES for a period of 25 years, is at least 65 years of age and has retired from active practice. For these purposes 'active practice' shall mean providing engineering consultation totaling more than 300 hours in a given year. Dues for retired status will be one-half the dues of normal membership, which will currently be \$70.

The Two-Tier (State Only) Life Membership is available if the person has been a continuous member of SDES for a period of 40 years and is at least 65 years of age. Life membership is free.

SDES currently has 104 State Only members, with over 40 members in the Eastern Chapter. Under the new membership model all new members must be three tier members (NSPE/SDES/Chapter). Both Retired and Life Membership status is also available for Three Tier members.

If anyone believes they are eligible for either Retired or Life member status, they should contact Nancy Hoines.



Mark Joffer

pe Group, inc.

225 North Main – PO Box 567
Parker, SD 57053

605-297-3647

mark.joffer@pegrouppengr.com

College and Major:

SDSU and BSEE



Favorite Quote: “I can do all things through Christ who strengthens me”

- I presently serve as Chairman of the Board for Heartland Consumers Power District in Madison, SD
- I am a registered professional engineer in 22 states.
- I am a consulting electrical engineer who provides electrical design for commercial buildings (schools, healthcare, offices, malls, apartments, etc.) and industrial facilities (water treatment, waste water treatment, feed and grain facilities). I also design roadway lighting systems as well as electrical distribution systems for residential developments. I specialize in the design of electrical systems for areas made hazardous due to the presence of combustible dusts and gases.

Family: Wife – Lisa, 3 grown daughters and 2 grown sons. 3 grandchildren with #4 on the way!

Hometown: Parker, SD

Job Title and Years With Firm: President and founder - 23 years. 34 years total in Engineering profession.

Favorite Room in My House and Why: My shop. That’s where I get to tinker.

My Normal Breakfast: Carnation Instant Breakfast

Last CD Purchased: Eagles – Greatest Hits

Last DVD (movie or game) Purchased: Movie - Tombstone.

Hobbies: Classic Cars

What do you collect? Muscle cars and Classic cars

My Best Personality Trait: Empathy

Pets: Dog - Adrian

Pet peeves: Rude and impatient people.

Favorite beverage: It’s hard to beat an ice-cold beer on a hot summer day.

Favorite TV Show: Longmire

Favorite Season: Fall

People may not know about me... I have served my hometown as a City Councilman, Mayor, and Chairman of the local Economic Development Corporation.

What made you want to be an engineer? My dad had a TV and Appliance business when I was growing up and it peaked my interest in electricity. I also had an influential High School Physics teacher, Mr. Paul Selby, that really promoted the engineering profession.

What do you like best about being an engineer? The ability to use knowledge and creativity to solve both simple and complex problems.

Describe a significant event in your career. Starting my own consulting engineering firm after having worked for two very good engineering and construction companies.

Describe a significant event in your personal life. The day I married my wife Lisa, and the birth of each of my children are the days that I cherish most.

Describe an achievement from the past year you are proud of. Completing the design of a \$4 Million electrical system for an industrial plant .

What are you looking forward to in the next year? Meeting my new grandson, watching my other grandchildren grow, and seeing each of my children succeed in their own lives.

I hate it when... I don’t get to see my children who live several states away as much as I’d like to.

Favorite Place to Visit and Why: Summer – The Black Hills of South Dakota ; Winter – Florida & Arizona

2020-2021 OFFICERS AND CHAIRPERSONS

Officers

President	Ben Scholtz, PE
President Elect	Gabe Laber, PE
Vice President	Josh Peterson, PE
Secretary/Treasurer	Scott LaVoy, PE
Chapter Director(1st term)	Kari Johnson PE
Chapter Director(2nd term)	Riley Rinehart, EI
State Director	Devin Clay, PE
Past President	Krista May, PE

Committees

Nominating Committee	Lee Kaffar, BA
Mathcounts	Krista May, PE
Scholarship	Lance Mayer, PE
Events Coordinators	
E-Week	Erin Steever, PE
Winter Social	Gabe Laber, PE
Golf Outing	Gabe Laber, PE
Awards Banquet	Jedidiah Reimnitz, PE
Awards	Wes Philips, PE
Audio/Visual IT	Chad Stensland, PE
Newsletter	Abby Nelson, PE
Membership List	Myron Adam, PE

Eastern Chapter of SDES Goals

- To promote the licensed practice of engineering and to provide learning opportunities that enable licensed engineers to maintain practice competency;*
- To maintain high ethical standards for the practice of engineering and lead the profession in adhering to these principles:*
- To protect the public health, safety, and welfare; while being good stewards of the environment;*
- To incorporate engineering principles and perspectives in government decisions that protect the public; and*
- To consider community service a professional obligation.*

SDES Mission Statement

SDES is the state society of engineers from all disciplines that promotes the ethical and competent practice of engineering, advocates licensure, enhances the image of its members, and advocates legislation and public policy for the betterment of human welfare and the profession.

Webex Login Instructions

Login Information for SDES Eastern Chapter

**Meeting: Virtual via Webex on
Tuesday, December 15th at Noon
(CST)**

Meeting number (access code): 177 153
4933

Meeting password: wtKmtTkE784

Join from the meeting link:

[SDES and ACEC/SD WebEx Enterprise Site - Start Your Meeting](#)

Join by phone

1-650-479-3208 Call-in toll number (US/Canada)

For any and all newsletter articles, additions, edits, corrections, and important dates contact:

Abby Nelson, PE
HDR
101 S. Phillips Avenue, Suite 401
Sioux Falls, SD 57104
605-977-7753
Abby.Nelson@hdrinc.com

For all State Society membership information and other business, contact:

Nancy Hoines
SDES Executive Director
PO Box 1076
Pierre, SD 57501
605-951-1004
sdengineeringsociety@gmail.com

Ideas transform communities



Sioux Falls 605.977.7740

Rapid City 605.791.6100

hdrinc.com



HRGREEN.COM

Since 1913, HR Green has provided solutions that build communities and improve lives.

▷ 431 N. Phillips Avenue | Suite 400 | Sioux Falls, SD 57104

▷ Phone 605.334.4499

TRANSPORTATION + WATER + GOVERNMENTAL SERVICES
LAND DEVELOPMENT + ENVIRONMENTAL + CONSTRUCTION

KLJENG.COM



ENGINEERING, REIMAGINED

www.bannerassociates.com

Brookings

Sioux Falls

Vermillion

Milbank

Rapid City

Toll Free
1.855.323.6342

Civil/Transportation
Municipal Engineering
Land/Site Development
Water Treatment, Storage & Distribution
Wastewater Collection & Treatment
Water Resources
Surveying



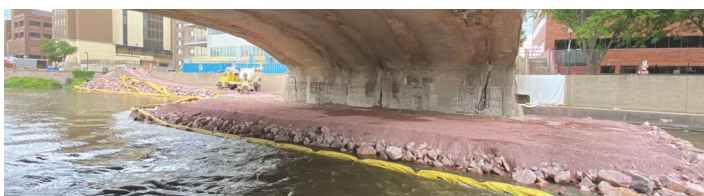
The **FUTURE**. Built Smarter.

Clark Engineering is now IMEG.

Proud to serve South Dakota. We put relationships and communities first without sacrificing expertise.

Civil Engineering | Land Surveying | Landscape Architecture | Environmental Services

WWW.CLARK-ENG.COM | WWW.IMEG.CORP.COM



SERVICES

- Piling and deep foundations
- Pedestrian bridges
- Soil retention and cofferdams
- Bridge repair
- New bridges
- Historical bridge restoration
- Box culverts
- Structural concrete
- Epoxy overlay
- Wastewater treatment



OFF SEASON IS THE RIGHT SEASON

The Leading Distributor of Water, Sewer & Storm Drain Products & Services

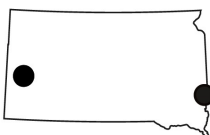


WE'RE ALL ABOUT

South Dakota

Rapid City
2808 E. Hwy. 44
(605) 716-9427

Sioux Falls
2101 E. 54th St. North
(605) 339-2814



Local Knowledge | Local Experience | Local Service, Nationwide®



WE ARE ULTEIG

Delivering engineering and technical services to Lifeline Sectors® vital to everyday life.

5701 S Corporate Place, Suite 1
Sioux Falls, SD 57108
605.323.2306


www.ulteig.com | We Listen. We Solve.®

LASTING PRECAST SOLUTIONS FOR AMERICA'S INFRASTRUCTURE



HancockTM
www.hancockconcrete.com

Sioux Falls, SD | Devils Lake, ND
Lake View, IA | Hancock, MN
Cannon Falls, MN | Courtland, MN | Moorhead, MN



CEMCAST
PIPE & PRECAST

SOUTH DAKOTA'S PREMIER PIPE & PRECAST PRODUCER

26088 466th Avenue • Hartford, SD 57033 • cemcast.com

infrastructure
design group inc.

Sioux Falls | Watertown | Mitchell
605-271-5527
▲ InfrastructureDG.com



Structural Engineering | Municipal Engineering
Transportation Engineering/Planning | Water Resources | Site Development
Land Surveying | Construction Observation | Parks & Recreation

ESS BROTHERS & SONS, INC. 

PREVENT INFLOW/INFILTRATION



Infi-Shield **Gator Wrap** **Flex-Seal**

9350 County Road 19 Phone: 763-478-2027 Fax: 763-478-8868
Loretto, MN 55357 website: www.essbrothers.com

B BIRSCHBACH
EQUIPMENT & SUPPLY

Geogrids, Geotextile Fabrics,
Gabions, Erosion Control, Geocell.
We have a Solution for your Problem.
Let Us Help You Today!
Sioux Falls 605-332-4466 Rapid City 605-348-6440



Sayre Associates

Vibration Monitoring,
Construction Administration,
Civil Engineering & Land Surveying
Call us to discuss your project needs!

www.sayreassociates.com • Phone: (605) 332-7211

WPE WEST PLAINS ENGINEERING, INC.

AN ENGINEERING SOLUTION CENTER

MECHANICAL ELECTRICAL PLUMBING POWER

SIoux FALLS, SD ■ RAPID CITY, SD ■ BISMARCK, ND
CASPER, WY ■ CEDAR RAPIDS, IA

westplainsengineering.com



SDRMCA
South Dakota Ready Mix Concrete Association

Jody Titze, PE
Executive Director
5024 S. Bur Oak Place, Ste. 113A, Sioux Falls, SD 57108
office (605) 274-0145 | cell (605) 366-9585
jtitze@sdrmca.org | www.sdrmca.org

Civil Design
Construction Management
Data Science
Environmental
ITS/Traffic Engineering
Planning
Structures
Transportation Operations/Safety
Water Resources



**FELSBURG
HOLT &
ULLEVIG**
connecting & enhancing communities

ENGINEERS ■ SCIENTISTS ■ PLANNERS

WWW.FHUENG.COM

Jennica Wilcox, PE 600 E 7th Street, Sioux Falls, SD 605.777.1973



**GEOTEK ENGINEERING
& TESTING SERVICES, INC.**

Resources for Design and Construction

909 East 50th Street North
Sioux Falls, South Dakota
P: 605-335-5512 F: 605-335-0773
www.geotekeng.com

Geotechnical • Construction Materials/NDT
Environmental • Indoor Air Quality/CIH



Designing Solutions
for community growth

As a national leader with long-time relationships in water-focused services, Bartlett & West is your ally for success.

**Bartlett
& West**

5900 S. Western Ave., Suite 101 Sioux Falls, SD www.bartlettwest.com



**MINNEHAHA
COUNTY**



**ROAD TO
ZERO**

Transportation Excellence.



**Streets • Sewer • Drainage
Water • Airports • GIS
Electrical Power**

ENGINEERING
Trusted. Professional. Solutions.

Four locations including
Sioux Falls, SD
605-339-4157

dgr.com email:dgr@dgr.com




**AMERICAN
ENGINEERING
TESTING, INC.**

601 East 48th Street North
Sioux Falls, SD 57104
(605) 332-5371
www.amengtest.com

- Geotechnical
- Environmental
- Construction Materials Testing
- Chemistry
- Forensics

Trust *Delivered.*



**JSA ENGINEERS AND
LAND SURVEYORS**
Land Development • Municipal • Streets • Water • Sewer • GPS • Construction Staking

6810 S. Lyncrest Avenue • Suite 101
Sioux Falls, South Dakota 57108-2515
605-367-1036 • Fax 605-367-1002



Elk Point, SD 605.356.2308
Sioux Falls, SD 605.271.8998
Parkston, SD 605.928.7676
Wayne, NE 402.833.1830
Toll Free 800.499.2308

McLaury Engineering
Professional Engineers & Surveyors

www.mclauryengineering.com