

MEMBERS OF THE

NATIONAL SOCIETY OF PROFESSIONAL ENGINEERS

SDES EASTERN CHAPTER NEWSLETTER

PO BOX 1512 SIOUX FALLS, SD 57101 | WWW.SDES.ORG

NSPE-SD EASTERN CHAPTER
SOUTH DAKOTA
ENGINEERING SOCIETY

INSIDE THIS ISSUE

PRESIDENT'S COLUMN	1
TREASURER'S REPORT	2
UPCOMING EVENTS	3
SDES ANNUAL MEETING	4
MATHCOUNTS	5
GOLF SAVE THE DATE	6
NEW MEMBERS	7-8
WEBEX LOGIN	9*
ADVERTISEMENTS	10-13

WebEx: Our upcoming monthly presentations will be broadcast on WebEx so please plan on tuning in on the web to socially distance. See the instructions for how to use WebEx on pages 4 and 9 of this newsletter.

WELCOME TO OUR NEW MEMBERS

Patrick Bunkers
Loren Schoeneman
Danaca Schettler
Jacob Sonne
Scot Vander Pol

PRESIDENT'S COLUMN

BY BEN SCHOLTZ, PE

Well, with another Annual Conference behind us and spring soon turning to summer, it's now also time for a change of guard for our Eastern Chapter Officers. It has been a very interesting and challenging year as President, and I greatly appreciate the support of all our members and officers with their help to deliver the virtual events we were able to organize. Hopefully we can all return to "normal" this fall after what I hope to be a productive and successful construction season!

Gabe Laber will no doubt be an excellent new President - I look forward to his approach to the coming year's events and regular meetings at the (reconstructed) Pizza Ranch!

The Eastern Chapter officers have already begun planning and brainstorming ideas for upcoming volunteer, social, and presentation events, so keep an eye out for more info and let's make 2021-2022 a "comeback" for all the great things we do as an organization!

Special welcome to our newest members: Patrick Bunkers, Loren Schoeneman, Danaca Schettler, Jacob Sonne and Scot Vander Pol.

Thanks again for the opportunity to help lead our Chapter - I could not have done it without you all!

Cheers!



TREASURER'S REPORT

BY SCOTT LAVOY, PE

Previous General Fund Balance 3/18/2021 \$ 21,965.16

Deposits:

Interest Payment \$ 0.24

Interest Payment \$ 0.23

Total: \$ 0.47

Expenses:

None

Total: \$ -

Total General Fund Balance: \$ 21,965.63

Previous Scholarship Fund Balance 3/18/2021 \$ 5,860.19

Deposits: None

Total: \$ -

Expenses: None

Total: \$ -

Total Scholarship Fund Balance: \$ 5,860.19

Total Account Balance 5/10/2021 \$ 27,825.82



UPCOMING EVENTS

- Friday June 4th: (Virtual) Board Meeting - members are always welcomed to attend. For log-in information, reach out to Nancy at sdengineeringsociety@gmail.com.
- Wednesday June 9th: (Virtual) Annual Membership Meeting from noon to 1pm (Central Time) - all members are strongly encouraged to attend.
- Thursday June 24: Habitat for Humanity Build and hoping to set up a get together event at a near by park after the Habitat event for all. Watch for more information in your email.
- Wednesday, August 4th—SDES Golf Fundraiser



CALL FOR VOLUNTEERS

The Eastern Chapter is once again hosting the Annual Conference in 2022. If you want to join the planning committee or if you have speaker/ tour ideas, please reach out to Krista May at

kristam@infrastructuredg.com.

ANNUAL MEMBERSHIP MEETING

Login Information for SDES Annual Membership Meeting

**Meeting: Virtual via Webex on
Wednesday, June 9th at Noon (CST)**

Meeting number (access code): 177 649 8010

Meeting password: usDwzyDg777

Join from the meeting link:

[WebEx Meeting Link](#)

Tap to join from a mobile device (attendees only)

+1-650-479-3208,,1779516918## Call-in toll number (US/Canada)

Join by phone

1-650-479-3208 Call-in toll number (US/Canada)

Join from a video system or application

Dial 1776498010@sdes.webex.com

You can also dial 173.243.2.68 and enter your meeting number.



MATHCOUNTS RECAP
KRISTA MAY, PE

MATHCOUNTS SOUTHEAST CHAPTER RECAP

MATHCOUNTS looked a little different this year...

The entirely online competitions have been taking place since February. The format this year was a Chapter Competition followed by a Chapter Invitational Competition. The top 20% of students from the chapter, plus the highest scoring student from each school (if not in the top 20%) advanced to the Chapter Invitational. The top 5 highest scoring students from each chapter and the next 10 highest scoring students advanced to the State Competition.

We had 28 students compete this year at the Chapter level, including a couple students from a new school – Welcome Ethan School to the Southeast Chapter! We had 7 students advance to the State Competition and 1 who advanced to the National Competition. Congrats to all the students!

Southeast Chapter students who participated at State Competition

School	Student
Edison Middle School (Sioux Falls, SD)	Topher R Post
Yankton Middle School (Yankton, SD)	Aidan Harrell
Vermillion Middle School (Vermillion, SD)	Caleb M Mayrose
Edison Middle School (Sioux Falls, SD)	Brady R Wheeler
Edison Middle School (Sioux Falls, SD)	Elijah Sumey
Sacred Heart Middle School (Yankton, SD)	Cedric L Ekroth
Sacred Heart Middle School (Yankton, SD)	Sabrina Krajewski

Southeast Chapter student who participated in National Competition

Vermillion Middle School (Vermillion, SD)	Caleb M Mayrose
---	-----------------

Hopefully next year we will return to an in-person competition!

SAVE THE DATE

Wednesday, August 4

2021 Eastern SDES Annual Golf Outing

Brandon Municipal Golf Course



SHOTGUN START: 11:00 AM

SOCIAL HOUR: 4:00 PM

DINNER: 5:00 PM

**Format will be a two-person scramble
using a handicap scoring system.**

The annual golf outing is the major source of
funding for the Eastern SDES Scholarship program.

Isaac Schreurs

KFI Engineers

670 County B Rd W,
St Paul, MN 55113

(Works from home in Brandon)

itschreurs@kfi-eng.com



College and Major:

Northwest Technical Institute – AAS, Product Design & Engineering Technology

University of Sioux Falls – BA, Management, Business Innovation & Marketing

Eastern Kentucky University – BS, Fire Protection & Life Safety Engineering Technology (IN PROGRESS)

Favorite Quote: Do everything how you do anything.

What made you want to be an engineer? To serve our region with high quality fire protection design and engineering.

I was born in Sioux Falls and raised North of Sioux Falls near Baltic, SD. I am a graduate of Dell Rapids High School. I moved around the upper Midwest and ultimately came back to Brandon, SD where I currently reside. I have worked in a variety of different design positions throughout my career. Fire Protection has become a passion of mine and I started my Fire Protection Engineering degree in the spring of 2019 online at Eastern Kentucky University. I love the program and my courses. I will graduate with my engineering degree in the summer of 2023. My goal is to become a registered Fire Protection Engineer. I just started a new position at KFI Engineers as a Fire Protection Designer and I work remotely with monthly office visits to Roseville, MN or Fargo, ND.

Family: My beautiful wife Chelsea of 2 years.

Hometown: Brandon, SD

Job Title and Years With Firm: Fire Protection Designer – 2 months

Favorite Room in My House and Why: Kitchen, my wife and I enjoy cooking.

My Normal Breakfast: Protein shake and banana.

Hobbies: exercise, motocross, nascar, golf

My Best Personality Trait: Positivity

Pets: Stella (Black lab) and a cat named Dale.

Favorite beverage: iced coffee

Favorite TV Show: The new Magnum PI.

Favorite Season: Spring

People may not know about me... I am a paraplegic using a manual wheelchair.

Describe a significant event in your personal life. Being saved by the grace of God.

What do you like best about being an engineer?

I am not yet an engineer, but I work closely with many engineers while being in engineering school and what I enjoy most is coming up with innovative and high-quality solutions to our client's needs.

Describe a significant event in your career.

Landing a position at KFI Engineers as a Fire Protection Designer that allows me to grow into a Fire Protection Engineer.

Describe an achievement from the past year you are proud of. Learning to become a video director at Church.

What are you looking forward to in the next year? Growing and learning in my new position.

Favorite Place to Visit and Why: Kansas Speedway. My wife and I had our first date there and ever since we have made it a point to attend at least one NASCAR race per year at Kansas Speedway. We make a weekend out of it and enjoy ourselves while staying at a nearby Chateau that we both really enjoy.

Paris Marcy

SDSU Student

paris.marcy@jacks.sdstate.edu

College and Major:

South Dakota State

Civil Engineering



I am from the western suburbs of Minneapolis. I currently have a home there with my boyfriend and our “herd” – two dogs and two cats. I worked as a retail pharmacy manager for many years before deciding I wanted a more fulfilling career. I attended Normandale Community College in Bloomington, MN while working full time and earned my Associate of Arts. The coursework at Normandale and the networking opportunities there helped me decide to pursue a career in Civil Engineering. I enjoy filling my time with activities and organizations that reach out and help others, and I spend a lot of my time volunteering. Currently, I serve as a voting member for Delta Alumni Association, a group founded to support the honor society I was an officer for at Normandale. I am also an officer at SDSU for the ASCE, Chi Epsilon, and ITE student chapters. In my free time, I enjoy gardening and hiking.

Family: I am the oldest of 3, my brother works for the VA in Minneapolis and is currently pursuing his master’s at the U of M, and my sister is a Chemical Engineer and lives in Seattle.

Hometown: Plymouth, MN

Favorite Room in My House and Why: Sunroom – doubles as my office, and has all my houseplants! My two dogs and cats each have their own little place they like to lay down in there while I work (Teddy’s favorite place is usually on my keyboard!).

My Normal Breakfast: Smoothie

Hobbies: Houseplants, gardening, hiking, bird-watching

What do you collect? Plants

My Best Personality Trait:

Pets: Two black labs, Lucy and Truckee, and two orange cats, Rocky and Teddy

Favorite beverage: Ginger lemonade at Big Bowl

Favorite Season: Winter

What made you want to be an engineer? I wanted a career where I knew I was doing something that helped people. Even though it might not be the first thing on people’s minds when they think of public service, I find designing and building infrastructure very gratifying. As I develop my career and my skills, I hope to use them to help underserved people through education and services.

Describe an achievement from the past year you are proud of. The SDSU ASCE student chapter was awarded the 2021 ASCE Distinguished Chapter Award for Region 7 for our work in 2020 while I was president. It was a challenging year, but we worked very hard to continue to provide opportunities for the students, and it was nice to see our efforts recognized!

What are you looking forward to in the next year? Graduating!

I hate it when...

Favorite Place to Visit and Why: Cabo San Lucas. The food, the drinks, the weather – can’t beat it!

2021-2022 OFFICERS AND CHAIRPERSONS

Officers

President	Gabe Laber, PE
President Elect	Josh Peterson, PE
Vice President	Devin Clay, PE
Secretary/Treasurer	Scott LaVoy, PE
Chapter Director(1st term)	Kent Ode, PE
Chapter Director(2nd term)	Kari Johnson PE
State Director	Riley Rinehart, PE
Past President	Ben Scholtz, PE

Committees

Nominating Committee	Lee Kaffar, BA
Mathcounts	Krista May, PE
Scholarship	Lance Mayer, PE
Events Coordinators	
E-Week	Erin Steever, PE
Winter Social	Gabe Laber, PE
Golf Outing	Gabe Laber, PE
Awards Banquet	Jedidiah Reimnitz, PE
Awards	Wes Philips, PE
Audio/Visual IT	Chad Stensland, PE
Newsletter	Abby Nelson, PE
Membership List	Myron Adam, PE

Eastern Chapter of SDES Goals

- To promote the licensed practice of engineering and to provide learning opportunities that enable licensed engineers to maintain practice competency;*
- To maintain high ethical standards for the practice of engineering and lead the profession in adhering to these principles:*
- To protect the public health, safety, and welfare; while being good stewards of the environment;*
- To incorporate engineering principles and perspectives in government decisions that protect the public; and*
- To consider community service a professional obligation.*

SDES Mission Statement

SDES is the state society of engineers from all disciplines that promotes the ethical and competent practice of engineering, advocates licensure, enhances the image of its members, and advocates legislation and public policy for the betterment of human welfare and the profession.

Webex Login Instructions

SDES Annual Membership Meeting

**Meeting: Virtual via Webex on
Wednesday, June 9th at Noon (CST)**

Meeting number (access code):
177 649 8010

Meeting password: usDwzyDg777

Join from the meeting link:

[WebEx Meeting Link](#)

For any and all newsletter articles, additions, edits, corrections, and important dates contact:

Abby Nelson, PE
HDR
101 S. Phillips Avenue, Suite 401
Sioux Falls, SD 57104
605-977-7753
Abby.Nelson@hdrinc.com

For all *State Society* membership information and other business, contact:

Nancy Hoines
SDES Executive Director
PO Box 1076
Pierre, SD 57501
605-951-1004
sdengineeringsociety@gmail.com



LOW RISK PRECAST SOLUTIONS

Since 1917

WHY CHOOSE HANCOCK CONCRETE?

For more than 100 years, we have invested in long-term relationships, continuously providing experienced engineering and total project support. Now, as part of Oldcastle Infrastructure, we look forward to offering products, such as StormCapture® & Dual-Vortex Separator, to meet your stormwater management project needs.

- Manholes
- Storm Catch Basins
- Box Culverts
- Reinforced Concrete Pipe


**Find your total project solutions at
hancockconcrete.com**

LASTING PRECAST SOLUTIONS FOR AMERICA'S INFRASTRUCTURE



HancockTM
www.hancockconcrete.com

Sioux Falls, SD | Devils Lake, ND
Lake View, IA | Hancock, MN
Cannon Falls, MN | Courtland, MN | Moorhead, MN



CEMCAST
PIPE & PRECAST

SOUTH DAKOTA'S PREMIER PIPE & PRECAST PRODUCER

26088 466th Avenue • Hartford, SD 57033 • cemcast.com

infrstructure
design group inc.

Sioux Falls | Watertown | Mitchell
605-271-5527
▲ InfrastructureDG.com



Structural Engineering | Municipal Engineering
Transportation Engineering/Planning | Water Resources | Site Development
Land Surveying | Construction Observation | Parks & Recreation

ESS BROTHERS & SONS, INC. 

PREVENT INFLOW/INFILTRATION



Infi-Shield **Gator Wrap** **Flex-Seal**

9350 County Road 19 Phone: 763-478-2027 Fax: 763-478-8868
Loretto, MN 55357 website: www.essbrothers.com

B **BIERSCHBACH**
EQUIPMENT & SUPPLY

Geogrids, Geotextile Fabrics,
Gabions, Erosion Control, Geocell.
We have a Solution for your Problem.
Let Us Help You Today!
Sioux Falls 605-332-4466 Rapid City 605-348-6440



Sayre Associates

Vibration Monitoring,
Construction Administration,
Civil Engineering & Land Surveying
Call us to discuss your project needs!

www.sayreassociates.com • Phone: (605) 332-7211

WPE **WEST PLAINS ENGINEERING, INC.**

AN ENGINEERING SOLUTION CENTER

MECHANICAL ELECTRICAL PLUMBING POWER

SIoux FALLS, SD ■ RAPID CITY, SD ■ BISMARCK, ND
CASPER, WY ■ CEDAR RAPIDS, IA

westplainsengineering.com



SDRMCA
South Dakota Ready Mix Concrete Association

Jody Titze, PE
Executive Director
5024 S. Bur Oak Place, Ste. 113A, Sioux Falls, SD 57108
office (605) 274-0145 | cell (605) 366-9585
jtitze@sdrmca.org | www.sdrmca.org



**FELSBURG
HOLT &
ULLEVIG**
connecting & enhancing communities

Civil Design
Construction Management
Data Science
Environmental
ITS/Traffic Engineering
Planning
Structures
Transportation Operations/Safety
Water Resources



ENGINEERS SCIENTISTS PLANNERS

SIoux FALLS, SD

Jennica Wilcox, PE | 605.777.1973 [WWW.FHUENG.COM](http://www.fhueng.com)



**GEOTEK ENGINEERING
& TESTING SERVICES, INC.**

Resources for Design and Construction

909 East 50th Street North
Sioux Falls, South Dakota
P: 605-335-5512 F: 605-335-0773
www.geotekeng.com

Geotechnical • Construction Materials/NDT
Environmental • Indoor Air Quality/CIH



Designing Solutions
for community growth

As a national leader with long-time relationships in water-focused services, Bartlett & West is your ally for success.

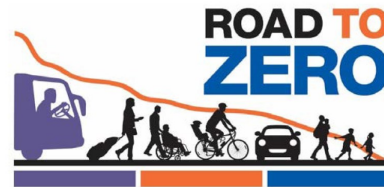


**Bartlett
& West**

5900 S. Western Ave., Suite 101 Sioux Falls, SD www.bartlettwest.com



**MINNEHAHA
COUNTY**



Transportation Excellence.



**Streets • Sewer • Drainage
Water • Airports • GIS
Electrical Power**

ENGINEERING
Trusted. Professional. Solutions.



Four locations including
Sioux Falls, SD
605-339-4157

dgr.com email: dgr@dgr.com  



**AMERICAN
ENGINEERING
TESTING, INC.**

601 East 48th Street North
Sioux Falls, SD 57104
(605) 332-5371
www.amengtest.com

- Geotechnical
- Environmental
- Construction Materials Testing
- Chemistry
- Forensics

Trust *Delivered.*[™]



**JSA ENGINEERS AND
LAND SURVEYORS**
Land Development • Municipal • Streets • Water • Sewer • GPS • Construction Staking

6810 S. Lyncrest Avenue • Suite 101
Sioux Falls, South Dakota 57108-2515
605-367-1036 • Fax 605-367-1002



Elk Point, SD 605.356.2308
Sioux Falls, SD 605.271.8998
Parkston, SD 605.928.7676
Wayne, NE 402.833.1830
Toll Free 800.499.2308

McLaury Engineering
Professional Engineers & Surveyors

www.mclauryengineering.com

Ideas transform communities



Sioux Falls 605.977.7740

Rapid City 605.791.6100

hdrinc.com



HRGREEN.COM

Since 1913, HR Green has provided solutions that build communities and improve lives.

▷ 431 N. Phillips Avenue | Suite 400 | Sioux Falls, SD 57104

▷ Phone 605.334.4499

TRANSPORTATION + WATER + GOVERNMENTAL SERVICES
LAND DEVELOPMENT + ENVIRONMENTAL + CONSTRUCTION

KLJENG.COM



ENGINEERING, REIMAGINED

www.bannerassociates.com

Brookings

Sioux Falls

Vermillion

Milbank

Rapid City

Toll Free
1.855.323.6342

Civil/Transportation
Municipal Engineering
Land/Site Development
Water Treatment, Storage & Distribution
Wastewater Collection & Treatment
Water Resources
Surveying



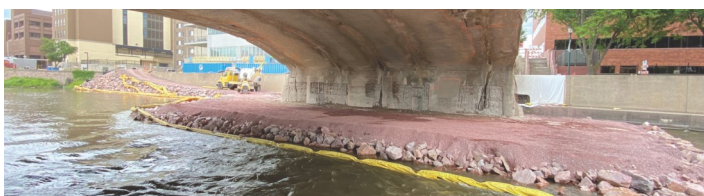
The **FUTURE**. Built Smarter.

Clark Engineering is now IMEG.

Proud to serve South Dakota. We put relationships and communities first without sacrificing expertise.

Civil Engineering | Land Surveying | Landscape Architecture | Environmental Services

WWW.CLARK-ENG.COM | WWW.IMEG.CORP.COM



SERVICES

- Piling and deep foundations
- Pedestrian bridges
- Soil retention and cofferdams
- Bridge repair
- New bridges
- Historical bridge restoration
- Box culverts
- Structural concrete
- Epoxy overlay
- Wastewater treatment



OFF SEASON IS THE RIGHT SEASON

The Leading Distributor of Water, Sewer & Storm Drain Products & Services

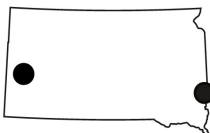


WE'RE ALL ABOUT

South Dakota

Rapid City
2808 E. Hwy. 44
(605) 716-9427

Sioux Falls
2101 E. 54th St. North
(605) 339-2814



Local Knowledge | Local Experience | Local Service, Nationwide®



WE ARE ULTEIG

Delivering engineering and technical services to Lifeline Sectors® vital to everyday life.

5701 S Corporate Place, Suite 1
Sioux Falls, SD 57108
605.323.2306

www.ulteig.com | We Listen. We Solve.®