



The Engineering Informer

INSIDE THIS ISSUE:

TREASURER'S REPORT	2
CALENDAR	2
CAREER OPPORTUNITY	2
FREE FIRST FRIDAYS	3-4
AWARDS BANQUET	5-6
EGGCELENT ENGINEERING	7
ANNUAL CONFERENCE	8
MEMBER BIO	9
WEBEX LOGIN	10
MISC.	10
ADVERTISEMENTS	11-13

WebEx: this month's presentation will be broadcast on WebEx so please plan on tuning in on the web if you can't be here in person! See the instructions on how to use WebEx on page 6 of this newsletter.

IMPORTANT NEWS

NEXT MEETING:

March 8, 11:45 AM @ Hancock Concrete Products, 1601 E 39th Street North
- Members will be touring the plant. Please bring a hard hat and safety glasses if you have them.

NEW MEMBERS:

- Mikala Fjerstad

PRESIDENT'S COLUMN BY RAY PIERSON—PE

This month I would like to start off by congratulating the award winners from the awards banquet held last Saturday. Along with the awards, there was a great turn out of engineers and spouses. The entertainment was also enjoyable for all; well maybe some of the "volunteers" may have a different opinion. A big thank you goes out to Wes Phillips, Erin Steever and everyone that was involved in putting this event together. As I have told a few of the attendees, this is the type of event that we strive for each year and we hope to keep meeting or exceeding the expectations of all attendees.

Many of you have been notified that registration is now open online for the Annual Conference. You will all be getting a copy of the registration flier in the mail soon. The lineup of presenters is sure to match the interests of all attendees. We look forward to seeing many of you April 6-8 in Sioux Falls.

At our monthly meeting in March we will be voting on new members for the Eastern Chapter. As always, all positions are open for nominations. See the list of positions in this letter

or ask a current board member for more information. Any nominations can be sent to Ray Pierson, Lee Kafar or Myron Adam.

This month we will be having an off-site meeting on Tuesday, March 8, 2016. Hancock Concrete Products is hosting a meal and plant tour at their Sioux Falls plant. The address is 1601 E. 39th Street North. If you have a hard hat and safety glasses, please bring them along; otherwise, safety equipment will be available at the plant. Please plan to be at the plant for the meal at 11:45am with a short meeting to begin at noon and the plant tour to begin around 12:15pm. A three edge bearing test on a reinforced concrete pipe will be performed for those that would like to view the test around 1:00pm.

In the past month we gained one student member, Mikala Fjerstad who is attending SDSU. We welcome Mikala and any other students that would like to join. Student memberships are free until they graduate.

SDES Eastern Chapter President, Ray Pierson

**TREASURER'S REPORT
BY LANCE WEATHERLY, PE**

	Balance as of	2/29/2016	
Previous General Fund Balance	2/7/2016		\$ 19,786.24
Expenses:			
E-Week post volunteer social	\$	(128.74)	
Total	\$	(128.74)	
Deposits:			
Banquet Revenue - deposit #1	\$	1,175.00	
Interest (February)	\$	2.25	
Total	\$	1,177.25	
Total General Fund		\$ 20,834.75	
Previous Scholarship Fund Balance	2/7/2016		\$ 6,771.52
Expenses:			
Total	\$	-	
Deposits:			
Total	\$	-	
Total Scholarship Fund		\$ 6,771.52	
Total Account Balance		\$ 27,606.27	

**IMPORTANT
CALENDAR
ITEMS**



EASTERN CHAPTER

MEETINGS:

- March 8, 11:45 @ Hancock Concrete, 1601 E 39th Street North
- ***No April Chapter Meeting***
- May 10, 11:30 @ Pizza Ranch on 41st Street

SDS Annual Conference

April 6-8 @ Downtown Holiday Inn, Sioux Falls

CAREER OPPORTUNITY

The City of Sioux Falls is currently seeking qualified candidates for two open Civil Engineer positions to join the Stormwater Engineering and Project/Construction Engineering teams. The Engineering Division of Public Works supports the planning, construction, and maintenance of the City's infrastructure. The City needs Engineers to take on the challenge and rewarding endeavor of maintaining the existing infrastructure and strategic investments to the future. The City's 2016-2020 Capital Improvements Plan includes \$556 million of construction and maintenance activities, the challenges and rewards are waiting for the right candidates!

Please click the following link <https://www.siouxfalls.org/human-resources/employment/career-opportunities.aspx> to be directed to position information, job description, and web based application portal. The application deadline is March 9th, 2016.

To add a calendar item, please contact Josh Peterson at JPeterson@siouxfalls.org

ENGINEERING WITH FREE FIRST FRIDAYS AT THE KIRBY SCIENCE DISCOVERY CENTER BY ERIN STEEVER, PE

Engineers constantly discover ways to improve our lives. Eight SDES South Dakota Engineering Society (SDES) volunteers sought to inspire students of all ages at the Kirby Science Discovery Center (KSDC) at the Washington Pavilion located in Sioux Falls, South Dakota on the evening of February 5, 2016 in the newly renovated Stage Science area.

Lee Kaffar and Dan Kvasnicka, with HDR, created a comical skit to engage the audience by asking where we can find engineering among our favorite animated cartoons. Scenes of a bumpy, poorly paved road in Disney Pixar's Cars®, runways in Disney Pixar's Planes®, and a 'simple' ice bridge from Disney's Frozen® connected the audience to engineering using familiar scenes. Each cartoon example was followed by real-life engineering projects, including animated Civil 3D video of a raised roadway interchange project.



SDES Events Coordinator, Erin Steever PE, with Banner Associates, and FFF Director Dixie Strande, with the KSDC and Washington Pavilion, pulled together seven activities to provide tangible engineering experiences for the 658 visitors (346 youth) that evening. Seismic Shakeup was a popular activity and visitors found themselves developing structures of wooden skewer members and modeling clay connections, paper was thrown into the mix as an added complexity. The structures were then tested on the earthquake table where engineers like Kent Johnson PE, Banner Associates, engaged discussion about successes and failures of the simple creations.

Upstairs on the fourth floor of the Washington Pavilion, Ken Allendar PE of Allendar Innovative Solutions, attracted visitors to construct folded paper columns. These are similar to massive composite water towers or grain silos. KSDC staff pre-folded and cut slits into scrap paper left over from another activity to provide a re-use for the material that would have otherwise been discarded.



Kari Drake, a sales engineer at ADS Pipe, moved in on friction and what makes the best roadway surfacing. Kids ran Matchbox cars over surfaces of felt, corrugated foil, a half-circle paper tube, pushpins with rounded heads, sand paper, and smooth cardstock. They found that not all surfaces provided similar results, and they were surprised that the half-circle paper tube was one of the fastest lanes, but were also drawn to the pushpin bumpy lane as their favorite.

Technology isn't always a focus of public outreach, and we wanted to change that this year. First, mechanical engineers use 3D printers to develop, modify and fix equipment. At FFF we used it to print of a replica of the nearby dinosaur skull. Several other pieces were on display and volunteers discussed some of the cool items they've designed and printed on their own 3D printers.

(CONTINUED ON PAGE 4)

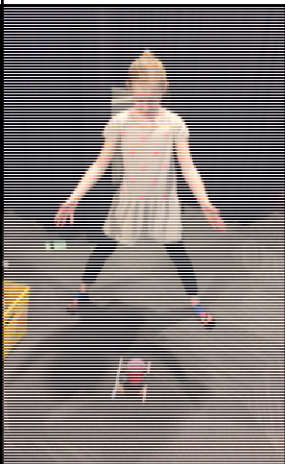
FREE FIRST FRIDAYS (CONTINUED)



Second, virtual reality glasses can be used to show project owners, developers, and financiers what their building or site layout can look like by converting Civil 3D design files into virtual reality 360-degree scene through light weight lenses that utilize your smart phone.

Visitors at the KSDC stepped into the new Farmhouse Fraternity house vestibule in Brookings, SD, a design by structural engineers and architects at Banner Associates, Inc. A printed floor

plan and section view of the house were reference to show how useful advances in technology can benefit a project. After walking in the virtual reality house, an owner can offer feedback that they may not have thought of with a printed floor plan. For example, could a window placement be shifted 2 feet so that near-blinding morning sunlight isn't directed onto couch dwellers in the living space, or is the vestibule providing that awe inspiring attraction to newcomers, even down to the paint color selection. Kids and adults alike were impressed by this technology that engineers and drafters are utilizing. Here, Lance Weatherly, engineer for the City of Sioux Falls, is testing the virtual reality glasses out for the first time.



NASA and space exploration is a fantastic springboard to engineering. By asking how can we keep our astronauts (aka. Marshmallows) safe during a lunar landing, kids constructed a lunar lander of paper cups (astronaut's cabin), cardboard and cardstock (platform), straws (lander support structure) and folded index cards (springs). Each design was tested with a freefall drop of roughly 18 inches. Visitors applied basic engineering principles to this hands-on activity as engineers and KSDC science minded volunteers encouraged them to identify what makes an efficient or better design to protect their marshmallows.

How many feet did you get? The younger kids always enjoy measuring, and we used our own feet to measure a piece of tape on the carpet. We then discussed why the two findings (my feet vs. your feet) were different, the importance of standard units of measure, and how we use this information as engineers in scaling plans to accurately dimensioned construction.



Volunteers and visitors to the KSDC had a fabulous, engaging time and we're so happy we could join in on the action and help the Nation celebrate engineering!

**EASTERN CHAPTER SDES/ASCE AWARDS BANQUET AND AWARD WINNERS
BY WES PHILIPS, PE**

Over 80 SDES and ASCE members and their guests attended this year’s awards banquet at the Hilton Garden Inn last Saturday evening. We had six worthy project nominations for Outstanding Engineering Achievement this year:



Minnehaha County Replacement Structure, Pre-stressed Inverted-T Girder with Composite CIP Deck. Submitted by Civil Design Inc.



Link Snacks, Inc. (LSI) Wastewater Pretreatment Facility. Submitted by Banner Associates, Inc



Elm River Intake Protection and Channel Improvements Water Treatment Plant. Submitted by Clark Engineering



SDDOT I-229/26th Street (Exit 5) Environmental Assessment and Finding of No Significant Impact Submitted by HDR, Inc.



Garfield Avenue Bridge Replacement in Dell Rapids, SD. Submitted by SEH



South Dakota Ellsworth Development Authority Wastewater Treatment Facility. Submitted by SEH

This year’s winners were the South Dakota Ellsworth Development Authority Wastewater Treatment Facility and Link Snacks, Inc. (LSI) Wastewater Pretreatment Facility.

(CONTINUED ON PAGE 6)

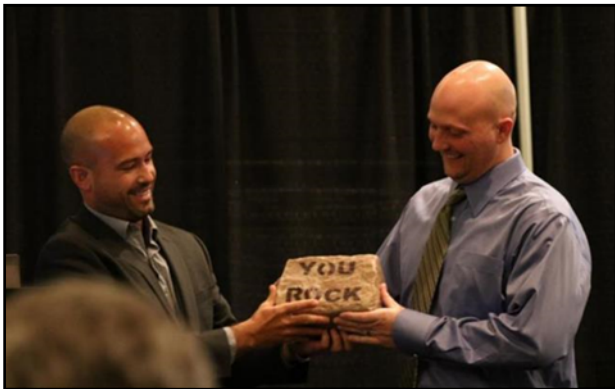
AWARDS BANQUET (CONTINUED)



Al Murra accepting the award on behalf of SEH for the South Dakota Ellsworth Development Authority Wastewater Treatment Facility.



Dave Odens and Dennis Rebelein by the award winning Link Snacks Wastewater Pretreatment display.



Kurt Peppel awarding the "You Rock" People's Choice Award for Engineering Project of the Year to Al Murra with SEH for the Garfield Avenue Bridge Replacement Project.



Kristin Lerdal from Sioux Falls was one of the recipients of a \$2000 engineering scholarship from our chapter. She plans to attend South Dakota School of Mines and Technology and major in Civil and Environmental Engineering.



Jason Kjenstad was awarded the honor of Engineer of the Year



Travis Clark was awarded the honor of Young Engineer of the Year

Award winners from the Eastern Chapter will advance on to the state competition. State awards winners will be announced at the SDES Conference on April 6-8 in Sioux Falls.

EGGCELLENT ENGINEERING: HUMPTY DUMPTY HOT RODS! DESIGN CHALLENGE AT THE WASHINGTON PAVILION BY ERIN STEEVER, PE

Disappointed that you weren't able to help with E-Week activities? Here's another chance, either get your kids involved or serve as a volunteer during the challenge. Contact Erin Steever (erins@bannerassociates.com) or Lynn Jones (ljones@washingtontpavilion.org) for more information and the registration form.



Design Challenge 2016

Eggcellent Engineering: Humpty Dumpty Hot Rods!



~~In a Nutshell~~ an Eggshell:

Join us for Design Challenge 2016, where teams are challenged to design, build and test a race car that will protect its "driver": an egg.



Saturday, April 2, 2016 at the Washington Pavilion

Compete for the title of Hot Rod Champion: Design and build a fast race car, with appropriate safety equipment, that can safely carry its driver (Humpty Dumpty) through a series of distance trials and crash tests.

How to get involved

- Participation is as simple as registering to let us know you're in! Anyone is eligible to register a team – schools, community groups, and families are all welcome.
- Please fill out the attached **registration form** and submit it to the Pavilion by **March 15, 2016**.
- Schedules for April 2 and set-up details will be sent to teams by the 2nd week of March.
- Judging protocol and rubrics will be provided after team registration is received.

Age Categories

K-2nd | 3rd-5th | 6th-8th | 9th-12th

Teams with members that span multiple age groups will be placed according to its oldest members.

Team Size

Teams should have at least 2 and up to 5 individuals.

Cost

There is no cost to participate in Design Challenge. Cost of materials for the Hot Rod should not exceed \$10.

Deadline for Registration: March 15, 2016

Sponsored by:



WASHINGTON
PAVILION

Experience Your Washington Pavilion

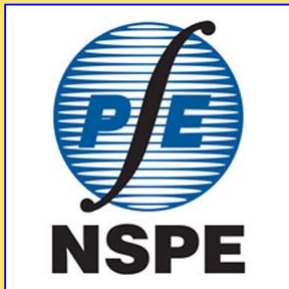
REGISTRATION IS OPEN FOR THE ANNUAL CONFERENCE

56TH ANNUAL SOUTH DAKOTA ENGINEERING SOCIETY CONFERENCE



April 6-8, 2016

Holiday Inn City Centre
Sioux Falls, SD



Go to www.sdes.org to register.
Early registration deadline is March 25th.

GETTING TO KNOW YOU Member Bio

LANCE MAYER

DGR Engineering
2909 East 57th Street, Suite 101,
Sioux Falls, SD 57108
Phone: 605-339-4157
Fax: 605-339-4175

Degree:

SDSM&T—Civil Engineering

Favorite Quote:

"Better to remain silent and thought a fool than to speak out and remove all doubt." ~ Abraham Lincoln

Favorite Fortune Cookie Saying:

"Your problem just got bigger. Think, what have you done." ~ My 10 year old son got that fortune.

A brief history... I was born and raised in Sioux Falls, SD where I attended Cleveland Elementary and Whittier Junior High before graduating from Lincoln High School in 1992. After graduation and a summer of Post 15 baseball, I packed up my Yugo and headed west to the SD School of Mines and Technology. I studied Chemical Engineering for the first 2 years I was in school before deciding to major in Civil Engineering. During my time at SDSM&T I was involved in a number activities and organizations which included becoming a member of Triangle Fraternity in 1994. After graduating from SDSM&T in 1997, I began working full time at DGR Engineering where I am still employed today.

I met the love of my life, Jenny Lichter, in the fall of 1992; however, I got stuck in the "friend zone" for the next 6 years. Not sure exactly what changed her mind but, fortunately, Jenny asked me out in the spring of 1998 and we were married in the fall of 1999. We bought a house shortly thereafter on the east side of Sioux Falls where we have been ever since.

Our marriage has blessed us with four great kids and not much free time. We have a 3rd grader, 5th grader, 7th grader and a freshman in high school who are involved in a number of activities (piano, band, chorus, basketball, volleyball, track, baseball, softball, tennis, etc.).



A LITTLE BIT MORE ABOUT OUR MEMBER OF THE MONTH:

Family: My wife Jenny is an Algebra I teacher at Washington High School. My children are Garrett (15 and driving), Abbie (13 and thankfully not driving yet), Charles (10) and Harold (8)

Hometown: Sioux Falls

Job Title and Years With Firm: Civil Engineer - almost 19 years

My Normal Breakfast: Lately it's been either nothing or things that aren't good for me.

Last CD Purchased: People still buy CDs? My last iTunes purchase included some Fetty Wap and One Direction.

Last DVD (movie or game) Purchased: Indiana Jones: The Complete Adventures

Hobbies: Slowpitch Softball, Fantasy Football and Throwing Darts

What do you collect? I would say sports cards and anything Incredible Hulk...my wife would say EVERYTHING.

Pets: Freshwater Fish (Jack Dempseys, African Cichlids, Raphael Catfish, African Featherfin Catfish, etc.)

Favorite beverage: Long Island Ice Tea

Favorite TV Show: Brooklyn Nine-Nine

Favorite Season: Fall - I just like the fall weather.

People may not know about me... I can do doubles with a jump rope pretty well. A few guys around the office lost a little cash because they didn't know (or believe) that I

could :)

What made you want to be an engineer? When I was a senior in high school and wasn't sure what to do, my dad told me that since I'm good at math and science I should look into Engineering. He said that they usually wore collared, button-up shirts and nice pants on the construction site so they probably make a lot of money.

What do you like best about being an engineer? I enjoy being a Civil Engineer because no matter what people sometimes think, when all is said and done we really do make things better.

What are you looking forward to in the next year? Having date nights with my wife and attending my kid's sporting events, recitals and concerts. I'm also looking forward to losing weight (not that I'm really going to do it...just figured maybe I would be more accountable if I publicized it).

I hate it when... People smoke cigarettes around the playground at the park or while being spectators at outdoor kids games.

Favorite Place to Visit and Why: Rapid City and the Black Hills. I have so many great memories out there from college and just love all the beautiful scenery and activities we can do as a family while visiting. It also has my favorite Chinese Restaurant...the Golden Phoenix.

2015-2016 OFFICERS AND CHAIRPERSONS

Officers

President	Ray Pierson, PE
President Elect	Kurt Peppel, PE
Vice President	Jonathan Wiegand, PE
Secretary/Treasurer	Lance Weatherly, PE
Chapter Director(2nd term)	Craig Lauritzen, PE
Chapter Director(1st term)	Joshua VandenBos, EIT
State Director	Ben Scholtz, PE
Past President	Ryan Johnson, PE

Committees

Nominating Committee	Lee Kaffar
Mathcounts	Phil Gundvaldson, PE
Scholarship	Lance Mayer, PE
Events Coordinators	
eWeek	Erin Steever, PE
STEMS Girls	Erin Steever, PE
Free First Fridays	Erin Steever, PE
Winter Social	Gabe Laber, PE
Golf Outing	Gabe Laber, PE
Awards	Wes Philips, PE
Audio/Visual IT	Chad Stensland, PE
Newsletter	Joshua Peterson, PE
Membership List	Myron Adam, PE

Webex Login Instructions

1. Navigate your internet browser to:
2. <https://sdes-eastern.webex.com>
3. Select the meeting date from the calendar in the "Browse Meetings" Window.
4. Click the "Register" link by the monthly meeting.
5. Fill in your first name, last name, email address and hit the "Register Now" button at the bottom.
6. A registration email will be sent with all the information to log into the meeting.

PDH Documentation

Sign-in sheets for Eastern Chapter meetings are posted on the SDES website for members to use for PDH documentation. Go to www.sdes.org to download sign-in sheets.

For any and all newsletter articles, additions, edits, corrections, and important dates contact:

JOSHUA PETERSON, PE
CITY OF SIOUX FALLS,
PUBLIC WORKS
224 W NINTH STREET
PO BOX 7402
SIOUX FALLS, SD 57117-7402
605-367-8616
jpeterson@siouxfalls.org

For all *State Society* membership information and other business, contact:

Gail Boddicker,
Executive Director
SDES
Rapid City, SD 57709
605-394-6674
Gail.Boddicker@sdsmt.edu

SDS MISSION STATEMENT

SDS is the state society of engineers from all disciplines that promotes the ethical and competent practice of engineering, advocates licensure, enhances the image of its members, and advocates legislation and public policy for the betterment of human welfare and the profession.

Bartlett & West

Bartlett & West and you...pursuing innovation, developing engineering and technology solutions, and strengthening our communities together.

you

BARTLETT & WEST 5900 S WESTERN AVE, STE 101 • SIOUX FALLS SD 605.274.7415 • BARTWEST.COM

JSA ENGINEERS AND LAND SURVEYORS

Land Development • Municipal • Streets • Water • Sewer • GPS • Construction Staking

6810 S. Lyncrest Avenue • Suite 101
Sioux Falls, South Dakota 57108-2515
605-367-1036 • Fax 605-367-1002

ADVANCED ENGINEERING AND ENVIRONMENTAL SERVICES, INC.



Think Big. Go Beyond.

WATER ENGINEERING
CIVIL ENGINEERING
SURVEYING/MAPPING/GIS
FINANCIAL SERVICES
ASSET MANAGEMENT
INSTRUMENTATION & CONTROLS

f t in YouTube
www.ae2s.com



1111 N. Lake Avenue
Sioux Falls, SD 57104
605-271-5527
▲ infrastructuredg.com



Municipal Engineering | Transportation Engineering/Planning | Water Resources
Site Development | Construction Observation | Parks & Recreation
Land Surveying



Durable. Dependable. Delivered.
Call CEMCAST today and let us put our concrete expertise to work for you.

Reinforced Concrete Pipe • Concrete Manholes

26088 466th Avenue Hartford, S.D., 57033 Phone 605 528 3530 Fax 605 528 3531



Trusted. Professional. Solutions.



PSMJ (Business, Inc.)
CIRCLE OF EXCELLENCE
2015

2909 E. 57th Street - Sioux Falls, SD - 605.339.4157
email: dgr@dgr.com - web: dgr.com



Civil Engineers & Land Surveyors
www.sayreassociates.com • (605) 332-7211



Expert. Precise. Utility Locating.
CALL TODAY
Brent Anderson – (605)351-5139
Bob Weatherford – (605) 496-3827
www.SUExplore.com



AVOID UNNECESSARY UTILITY CONFLICTS WHEN PLANNING YOUR PROJECTS



MINNEHAHA COUNTY

Minnehaha County Highway Department

2124 East 60th Street North
Sioux Falls, SD 57104
(605) 367-4316
www.minnehahacounty.org

Transportation Excellence.

Ideas transform communities



Sioux Falls 605.977.7740

hdrinc.com

The Right Solution for You

South Dakota Offices:
Beresford • Pierre • Rapid City • Sioux Falls

Services: Chemistry • Environmental
Forensics • Geotechnical • Materials

www.amengtst.com • (800) 972-6364



CITY OF SIOUX FALLS PUBLIC WORKS

Providing a Better Quality of Life for You!

Engineers Supporting the SDES Eastern Chapter: Shannon Ausen, Andy Berg, Nick Borns, Brittany Brickman, Dennis Clark, Mark Cotter, Jeff DesLauriers, Kerry Ellis, Rod Harms, Heath Hoftiezer, Chad Huwe, Ryan Johnson, Dena Knutson, Brad Ludens, Jacob Maras, Troy Miller, John Osman, Sara Pankonin, Kurt Peppel, Mark Perry, Josh Peterson, Wes Philips, Dustin Posten, Tim Stefanich, Curt Struck, Josh VandenBos, Shannon VerHey, Lance Weatherly, Raed Yousef



Engineering, Surveying,
and Consulting Services

5701 South Corporate Place
Suite 1
Sioux Falls, SD 57108
Tel: 605-323-2306



www.ulteig.com

SAVE MONEY

and gain effective capacity quickly and affordably with
Ess Brothers & Sons, Inc. I & I Prevention Products

FLEX SEAL
UTILITY
SEALANT®



9350 County Road 19
Loretto, MN 55357
Phone: (763) 478-2027



INFI-SHIELD®
UNI-BAND

Go to www.essbrothers.com
to see details on all our
products.

H&W Contracting, LLC

Thomas Hurd
President/Owner

3416 W. Hovland Drive
Sioux Falls, SD 57107
Phone: 605/339-8834
Fax: 605/339-9175
Cellular: 605/351-3339
E-mail: tom@h-wcontracting.com



Building Together™

Charles "Chuck" Cox
Market Manager
LEED AP BD+C, CGP, CSI, WC AP

221 N Ebenezer Ave.
Sioux Falls, SD 57107

Desk Phone: 605-335-0611
Cell: 605-787-2138
Fax: 605-335-4799
Email: ccox@gcc.com
www.gccusa.com

BIERSCHBACH
EQUIPMENT & SUPPLY

Geogrids, Geotextile Fabrics,
Gabions, Erosion Control, Geocell.
We have a Solution for your Problem.
Let Us Help You Today!
Sioux Falls 605-332-4466 Rapid City 605-348-6440

431 N. Phillips Avenue
Suite 400
Sioux Falls, SD 57104
P 605.334.4499
HRGREEN.COM

100 YEARS
FOR A REASON

TRANSPORTATION + WATER + GOVERNMENTAL SERVICES
ENERGY + LAND DEVELOPMENT

www.bannerassociates.com

Brookings
Sioux Falls
Vermillion
Milbank
Rapid City

Civil/Transportation
Municipal Engineering
Land/Site Development
Water Treatment, Storage & Distribution
Wastewater Collection & Treatment
Water Resources
Surveying

BANNER
Engineering | Architecture | Surveying

Toll Free
1.855.323.6342

Local Knowledge
Local Experience
Local Service, Nationwide®

2101 E 54th St N
Sioux Falls, SD 57104
(605) 339-2814

Rapid City • Sioux Falls

2808 E Highway 44
Rapid City, SD 57703
(605) 716-9427

HD SUPPLY
WATERWORKS

DSG
DAKOTA SUPPLY GROUP
For all the right connections!

LASTING PRECAST SOLUTIONS
FOR AMERICA'S INFRASTRUCTURE

HancockTM
www.hancockconcrete.com

Sioux Falls, SD | Devils Lake, ND
Lake View, IA | Hancock, MN
Cannon Falls, MN | Courtland, MN | Moorhead, MN

GEOTEK GEOTEK ENGINEERING
& TESTING SERVICES, INC.

Resources for Design and Construction

909 East 50th Street North
Sioux Falls, South Dakota
P: 605-335-5512 F: 605-335-0773
www.geotekeng.com

Geotechnical • Construction Materials/NDT
Environmental • Indoor Air Quality/CIH

Soukup
CONSTRUCTION, INC.
SIOUX FALLS, SD

Mailing Address
P.O. Box 89106
Sioux Falls, SD 57109

Phone
605.332.5282

Site Development • Environmental • Excavation • Demolition
Aggregates • Retaining Walls • Site Utilities